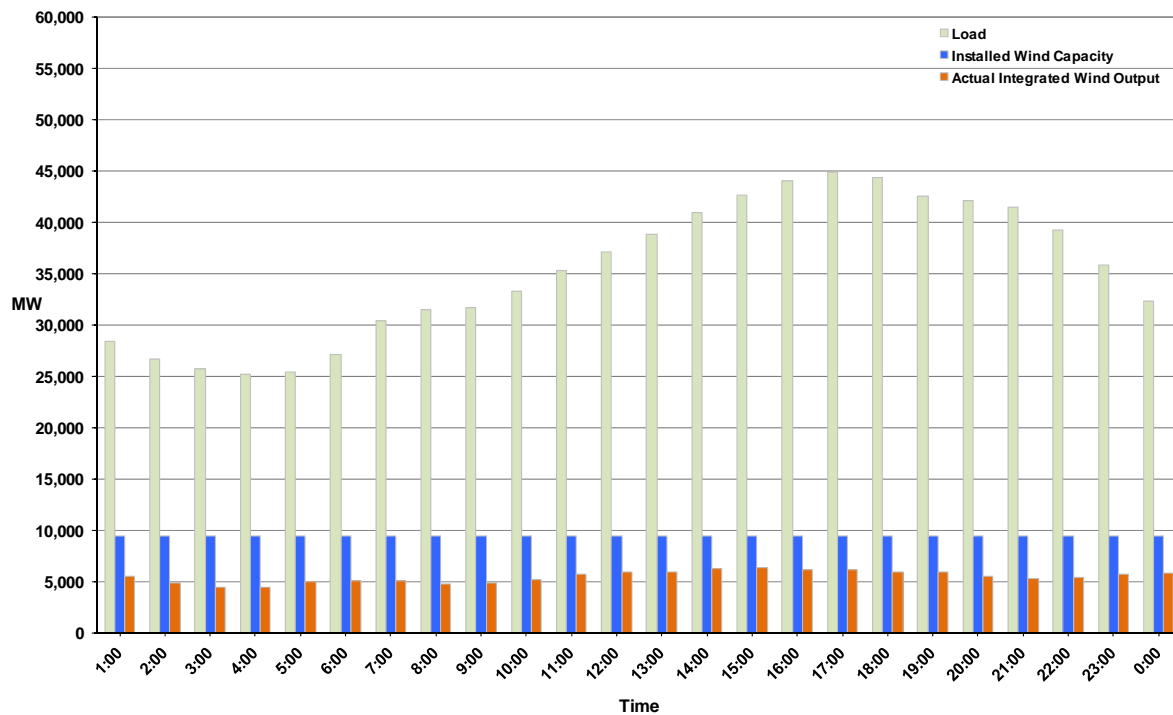




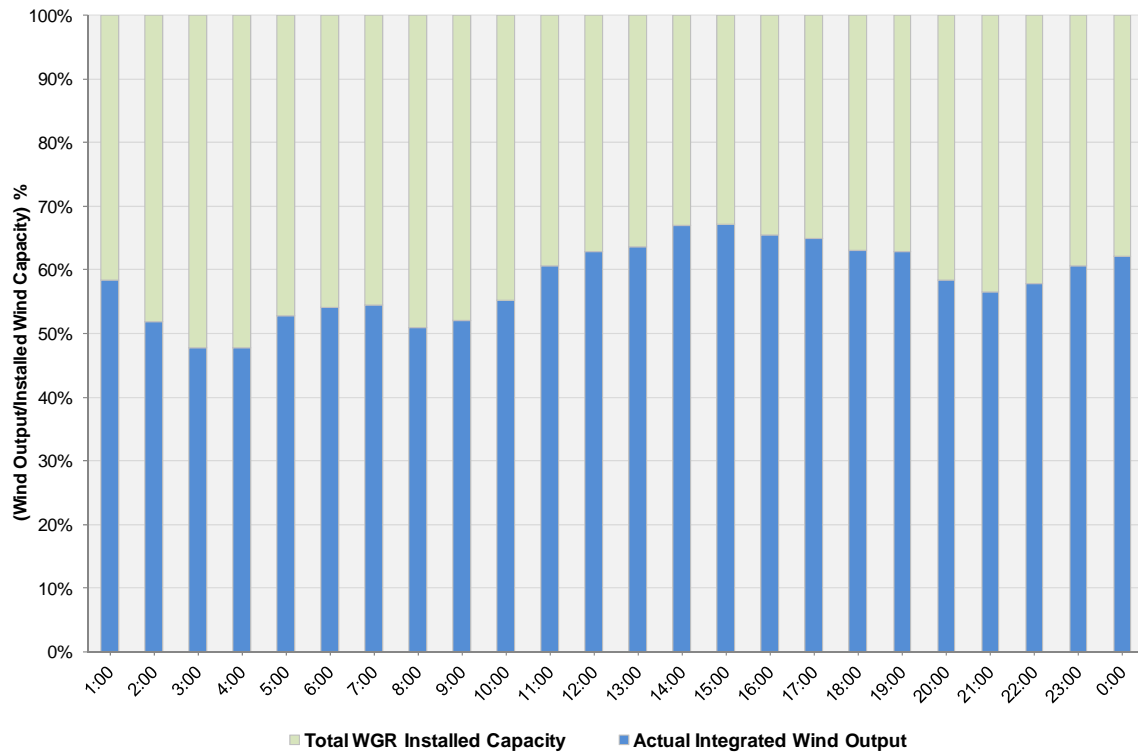
## ERCOT Grid Operations Wind Integration Report: 10/05/11

Peak Load	<b>44,889 MW</b>
Load Peak Hour	<b>17</b>
Wind over Peak	<b>6,129 MW</b>
Wind Record 06/19/11	<b>7,355 MW</b>
Max Wind Value	<b>6,440 MW</b>
Wind Peak Time	<b>13:22:00</b>
Wind Integration %	<b>15.80%</b>

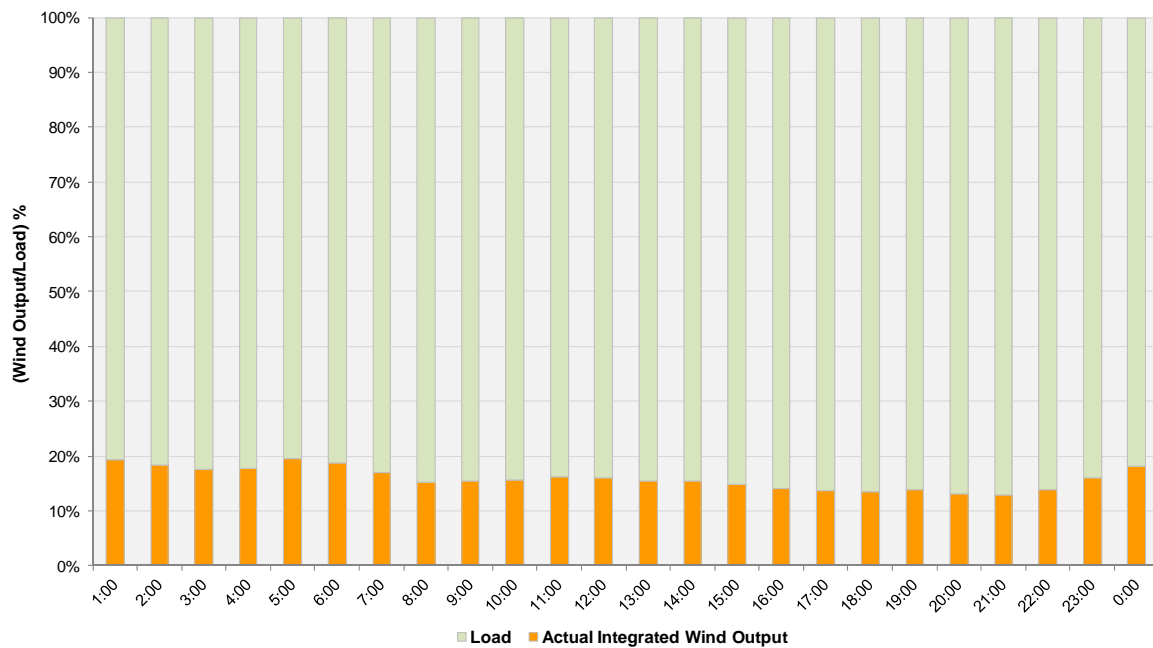
**Hourly Average Actual Load vs. Actual Wind Output  
10-05-2011**



**Actual Wind Output as a Percentage of the Total Installed Wind Capacity**  
**10-05-2011**



**Actual Wind Output as a Percentage of the ERCOT Load**  
**10-05-2011**



ERCOT Load vs. Actual Wind Output 9/28/2011 - 10/5/2011

